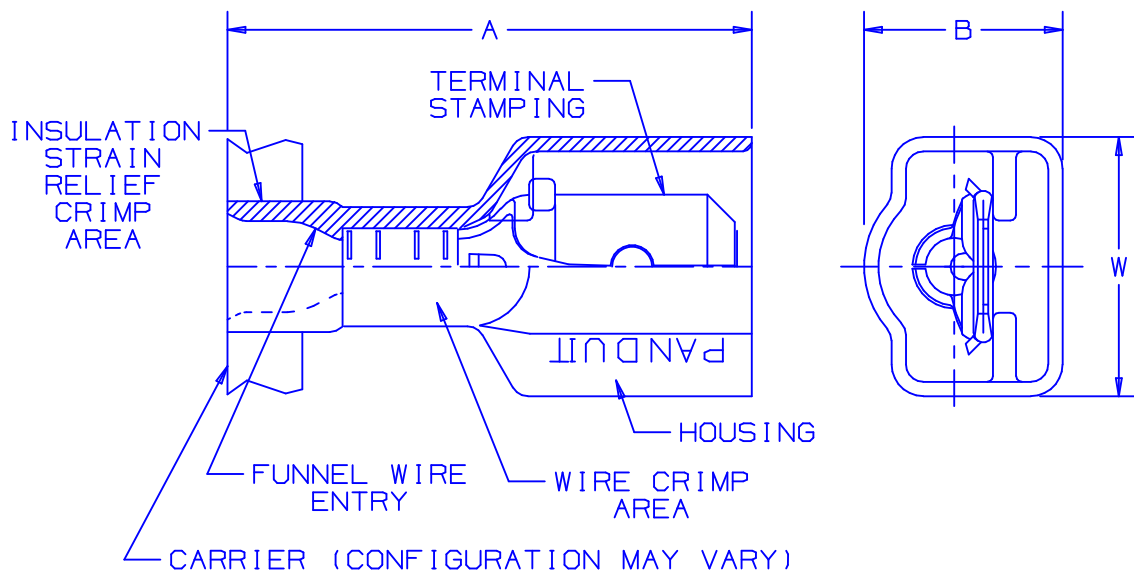
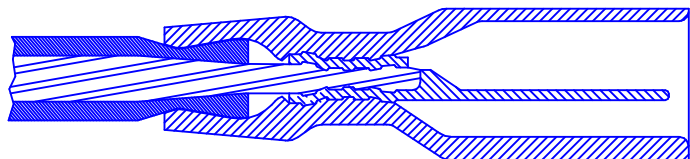


THIS COPY IS PROVIDED ON A RESTRICTED BASIS AND IS NOT TO BE USED IN ANY WAY DETRIMENTAL TO THE INTERESTS OF PANDUIT CORP.



NOTES:

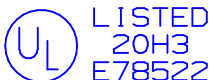
1. USED FOR:
 - A. 600V MAX VOLTAGE RATING
 - B. 221°F (105°C) MAX TEMP RATING
 - C. STRANDED COPPER WIRE ONLY
2. WIRE STRIP LENGTH: $9/32^{+1/32}_{-0}$ (7.1 $^{+0.8}_{-0}$)
3. MATERIAL:
 - A. STAMPING: NICKEL PLATED BRASS
 - B. HOUSING: PREMIUM GRADE NYLON FOR SUPERIOR STRAIN RELIEF INSULATION CRIMPING
4. PACKAGING: -2K = 2000 PCS CONTINUOUS MOLDED STRIP CARRIER
5. DIMENSIONS IN BRACKETS ARE IN MILLIMETERS OR mm^2



SECTION VIEW OF CRIMPED DISCONNECT

PART NUMBER		TAB SIZE	WIRE RANGE AWG (mm ²)	COLOR	MAX WIRE INSULATION DIAMETER	MIN WIRE INSULATION DIAMETER	DIMENSIONS in		
PREFIX	PK						A $^{+.03}_{-1.81}$	B $^{+.02}_{-1.51}$	W $^{+.02}_{-1.51}$
DPF18-250FIM	-2K	.250 X .032 (6.3 X 0.8)	22-18 (0.5-1.5)	RED	.133 (3.38)	.060 (1.52)	.90 (22.9)	.29 (7.4)	.41 (10.4)
DPF14-250FIM	-2K	.250 X .032 (6.3 X 0.8)	16-14 (1.5-2.5)	BLUE	.156 (3.96)	.090 (2.29)	.90 (22.9)	.29 (7.4)	.41 (10.4)

TOOL CHART RECOMMENDED PRESSES
CP-861, CP-860 CP-851, CP-862
CA-800/CA9 APPLICATOR DIE INSERTS
CD-800-10 CD9-10B
CD-800-11 CD9-11B



A41514_05

05	7/03	KLFU		ADDED INTERNAL SERRATIONS ADDED CA9 TO TOOL CHART						
04	1/01	RM	SKB	FILESPEC WAS N41514AA_PCD_03	8933		CCH	JAC		
03	10/98	JD		MATERIAL WAS TIN PLATED ADDED CP-862, CA9	07845					
02	10/96	TM	RS	UPDATED NOTES AND DIMENSIONS	05134		DH	LA		
REV	DATE	BY	CHK	DESCRIPTION	ECN	QA	PM	SUP	CUST	APP

PANDUIT CORP. TINLEY PARK, ILLINOIS

REELSMART™ DISCOGRIP™
PREMIUM NYLON FULLY INSULATED
MALE DISCONNECT .250 X .032

DRAWN BY KC CHK'D SCALE DRAWING NO A41514